

TECH ALERT! - GD FTC 0076

Level 2 (Moderate)



Technical Change & Notification	Gas Distribution	Tech Alert #: GD FTC 0076
Author/s:	Tristan Bodsworth	
Tech Alert Level:	Level 2 (Moderate)	Date: 9/03/2021
Dept. /Group:	Asset Management	
Heading:	Domestic Meter Kit Location	

1. OVERVIEW

Current practice is to install new domestic meter kits on the side (or front) wall of a customer's dwelling; typically within 2 metres of the front face of the building. Historically this was acceptable, however, in recent times the practice has led to installations being technically non-compliant with Australian Standards and Jemena's Network Operator Rules due to the increased congestion of utilities on dwelling wall-faces (e.g. NBN junction boxes, solar inverter units, zero boundary blocks etc.). This has occurred due to new building practices which result in reduced clearances between property boundaries and dwellings.

The proposed change is to allow for positioning of a meter kit at an alternative location on the property, specifically the boundary where the service enters the property to provide flexibility and enable compliance.

2. IMPACT TO WORK PARTY

The attachment to this Tech. Alert provides guidance on how to achieve a compliant installation and determining which position (dwelling or boundary) is most appropriate for a customer. The requirements are consistent with those documented in AS/NZS4645.1: 2018.

Teams shall make themselves familiar with the content of the attachment.

External market education campaigns will be implemented, specifically communication flyers to end users such as:

- trade;
- end consumers; and
- energy market retailers

Asset Management will prepare relevant documentation in consultation with key stakeholders for the above rollout to external parties.

3. NEW WORK PRACTICE

The new practice will allow the flexibility to locate a domestic meter kit on a property boundary if a compliant location cannot be found on the dwelling.

The gas connection portal will be modified to accommodate the new practice.

4. CONTACT

If you have any concerns or questions in relation to this memorandum, please contact *Tristan Bodsworth* from *Engineering Support – Gas Distribution* on tristan.bodsworth@jemena.com.au

Domestic Installation Requirements

9 March 2021

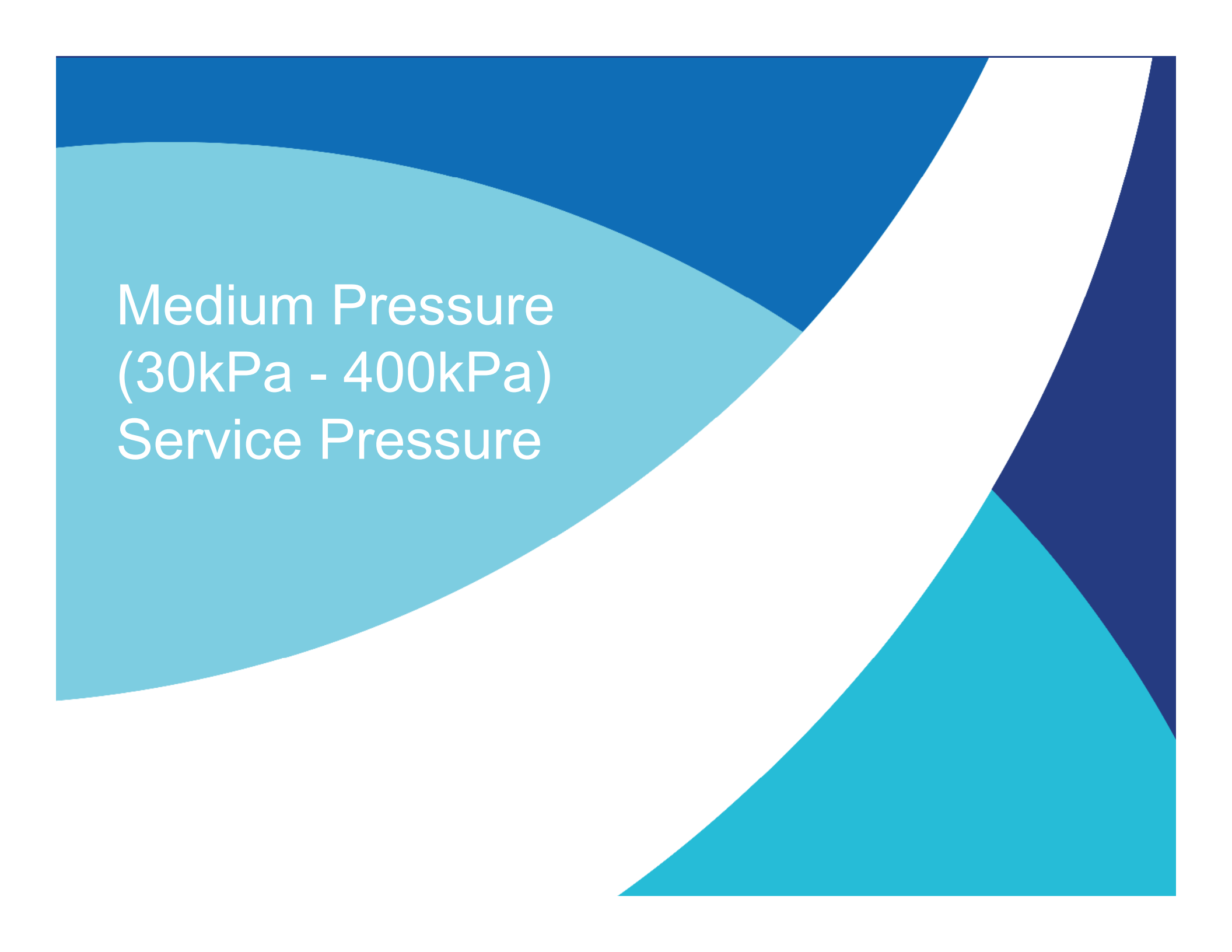
v1.1



Zinfra
Your trusted partner
in energy

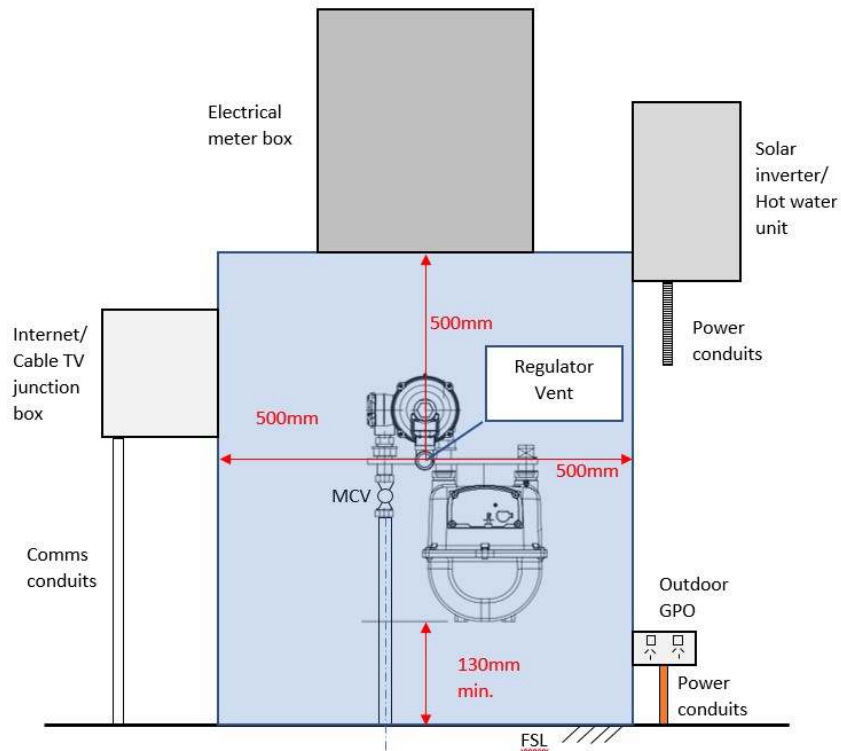


Jemena
bringing energy to life

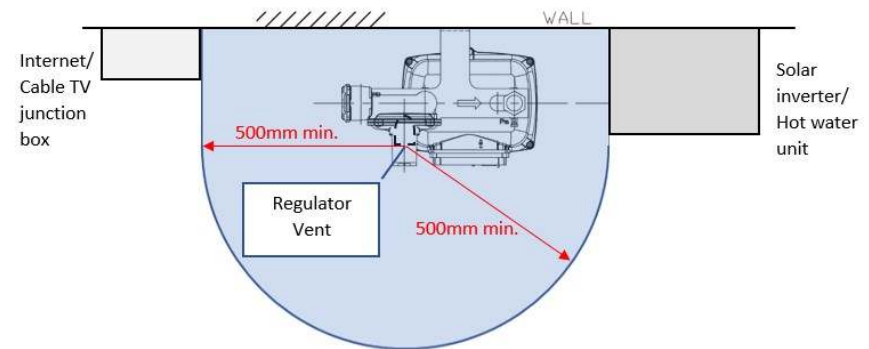


Medium Pressure
(30kPa - 400kPa)
Service Pressure

MP Installation – Ignition Sources



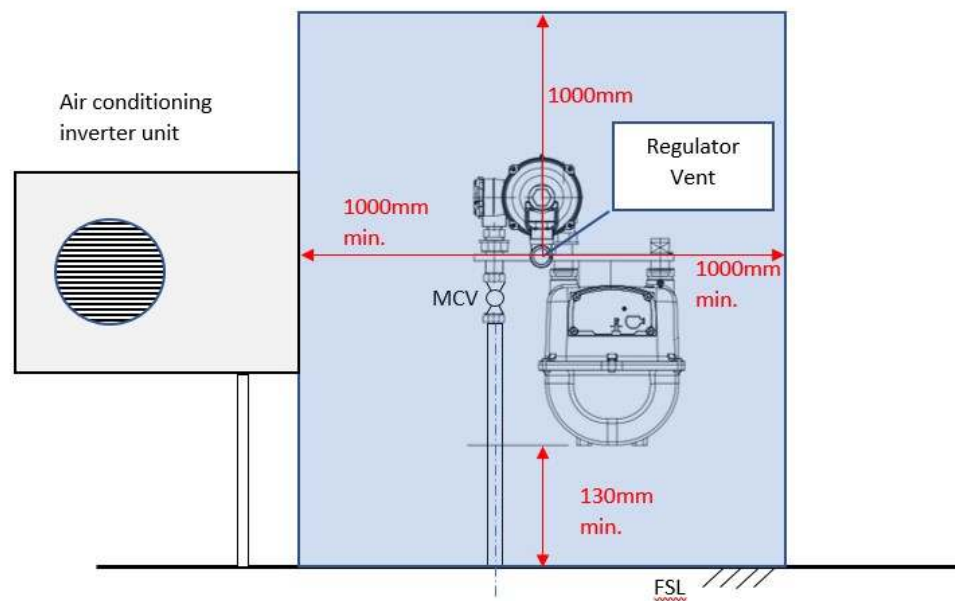
Elevation



Plan

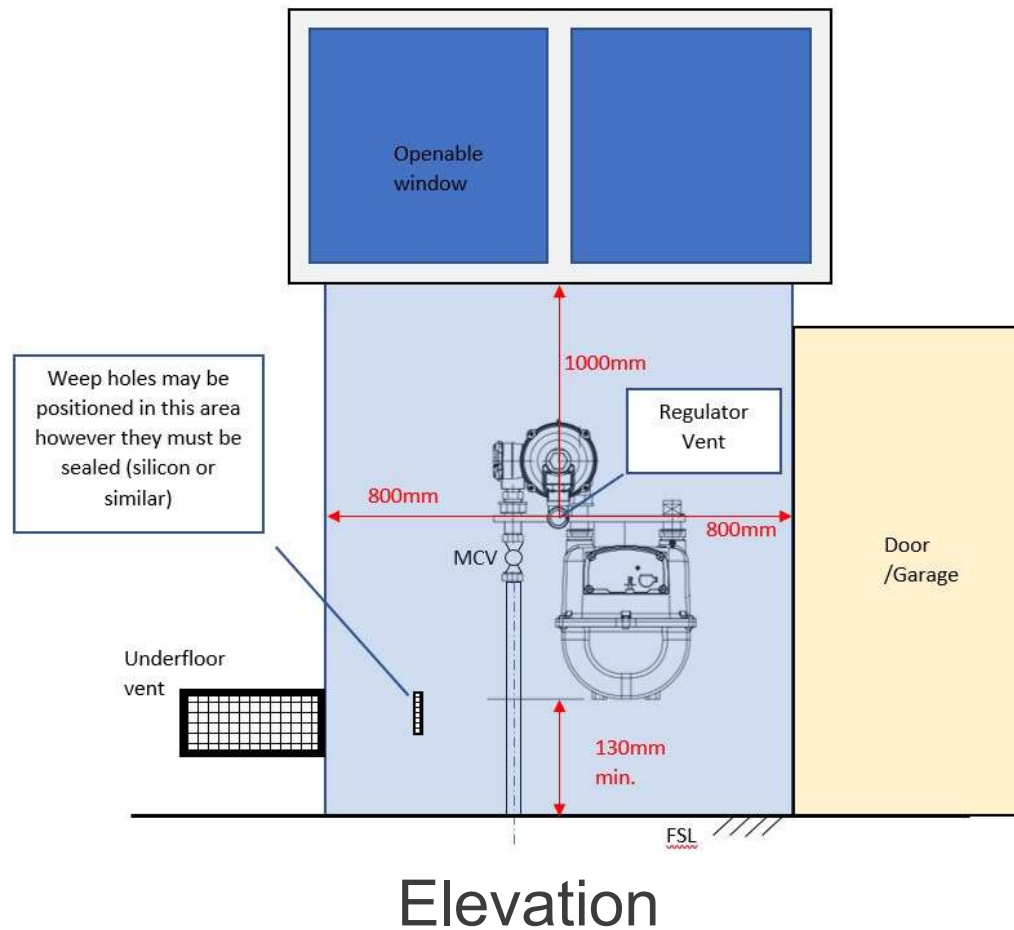
All dimensions indicated are minimum requirements

MP Installation – Ignition Sources (cont.)

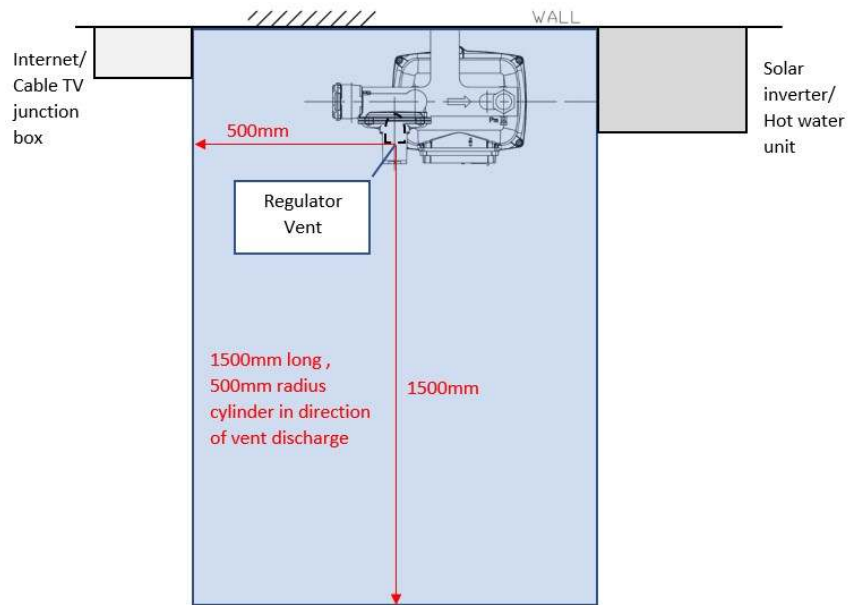


Elevation

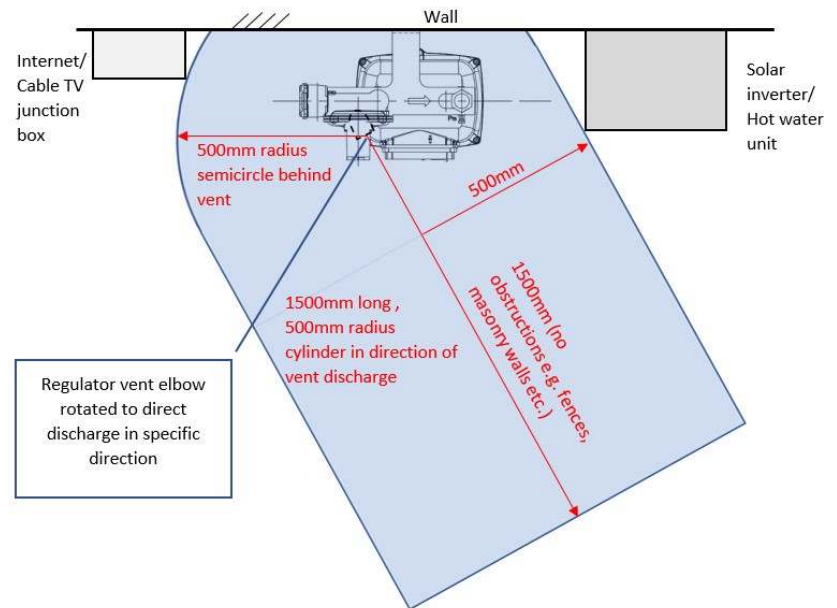
MP Installation – Openings



MP Installation – Relief Valve

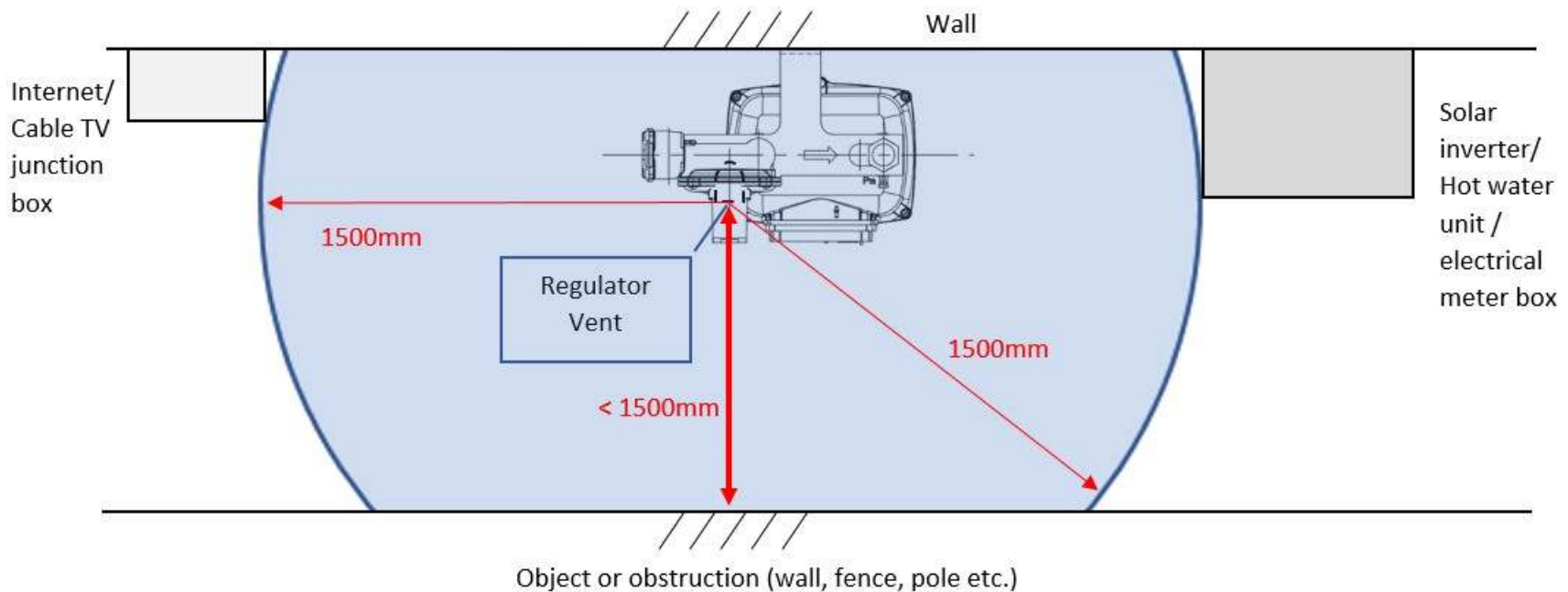


Vent 90° to wall

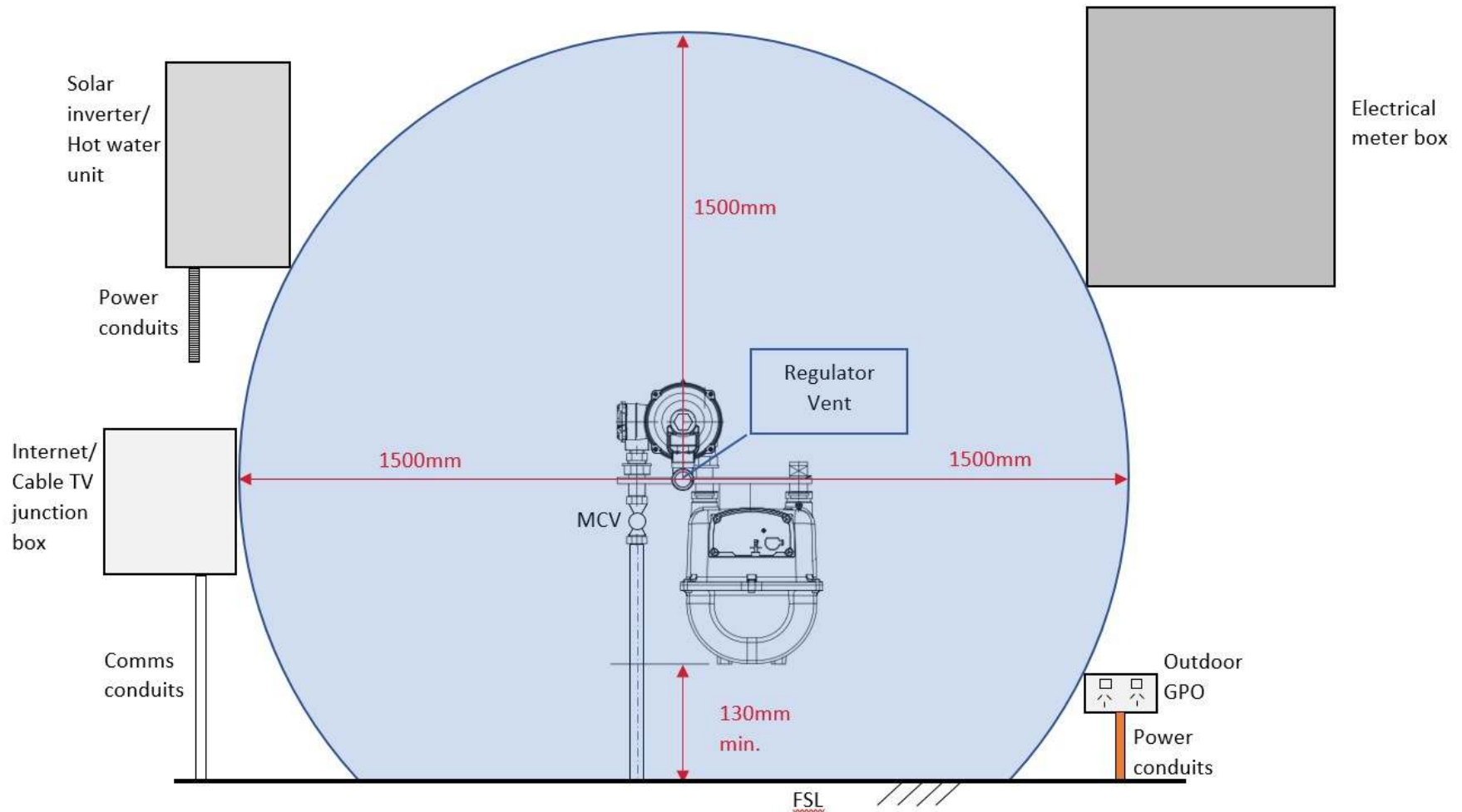


Vent rotated

MP Installation – Relief Valve (Obstructed)

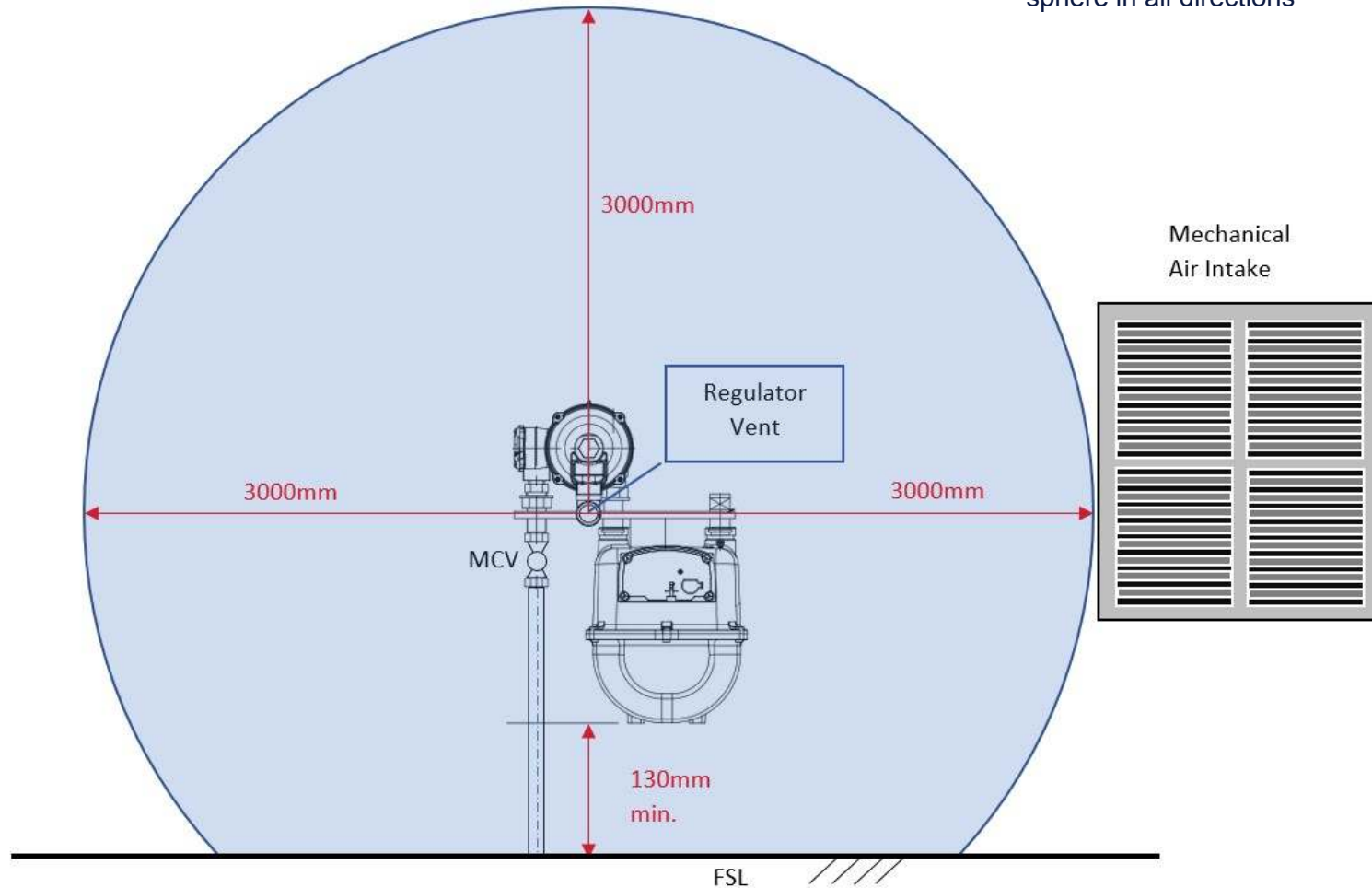


MP Installation – Relief Valve (Obstructed) (cont.)

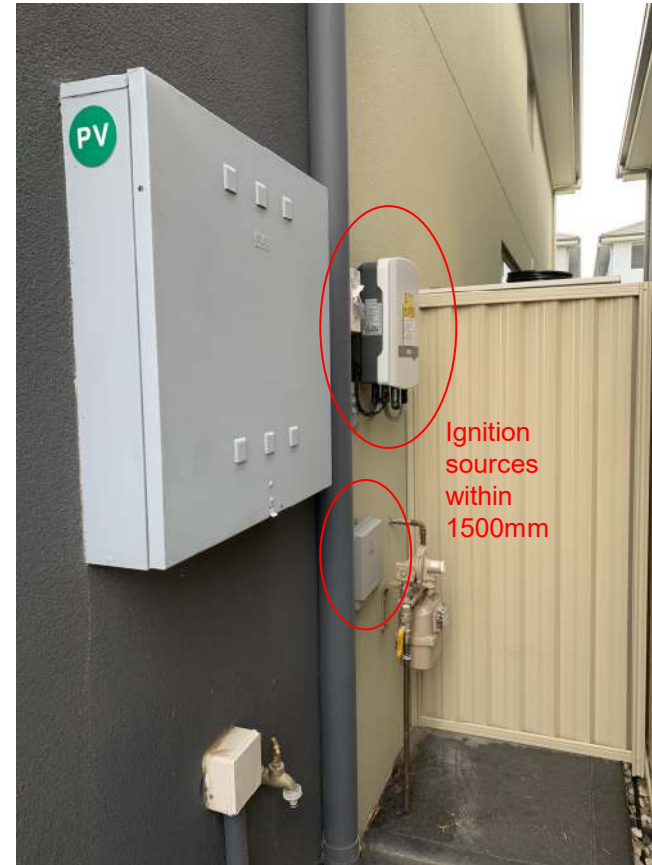


MP Installation – Mechanical Air Intake

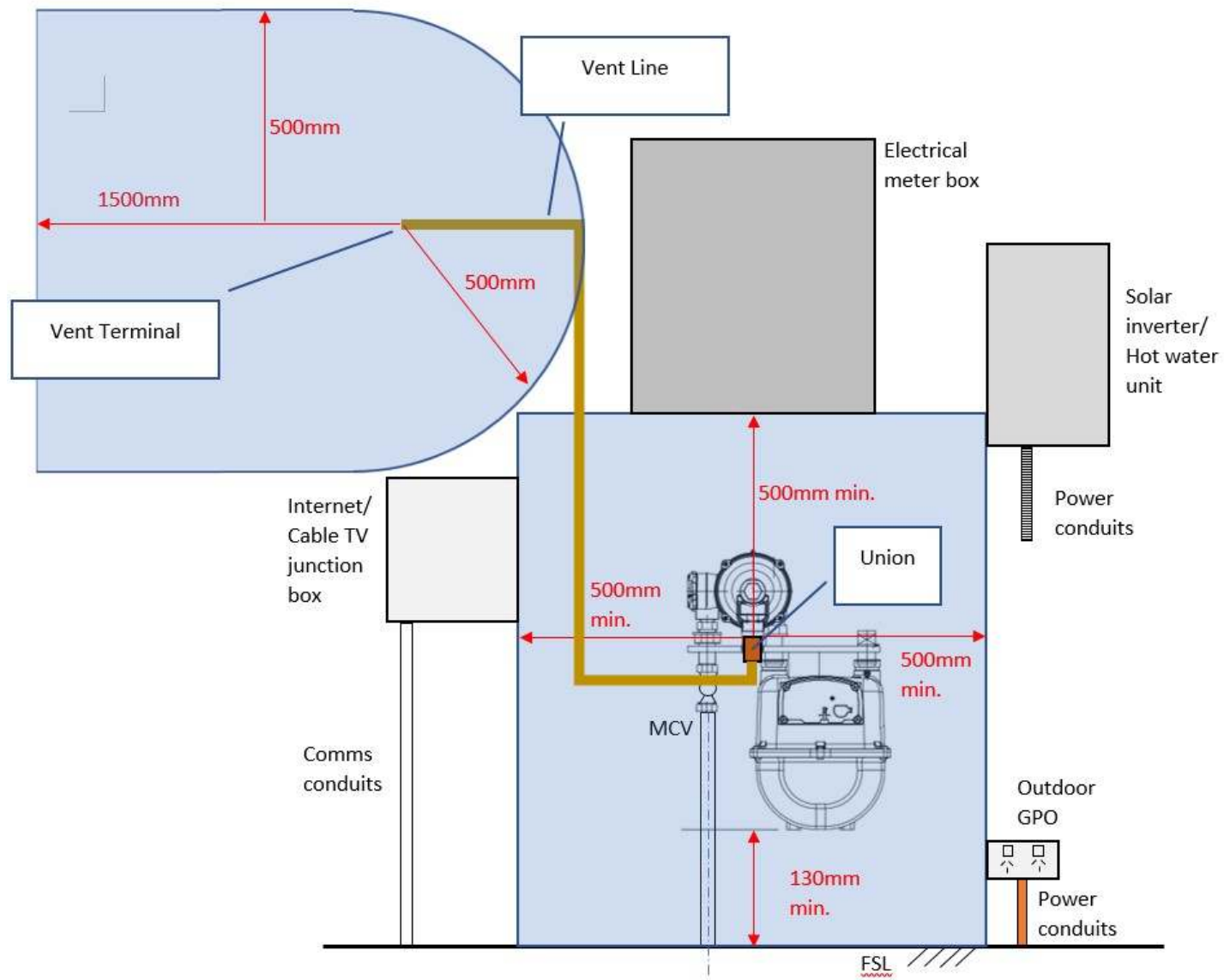
Note 3000mm dimension is a sphere in all directions



Example of concern



MP Installation - Relief Vent



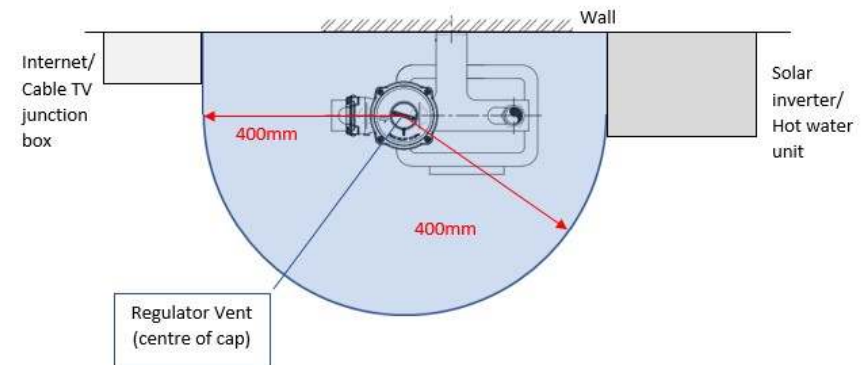
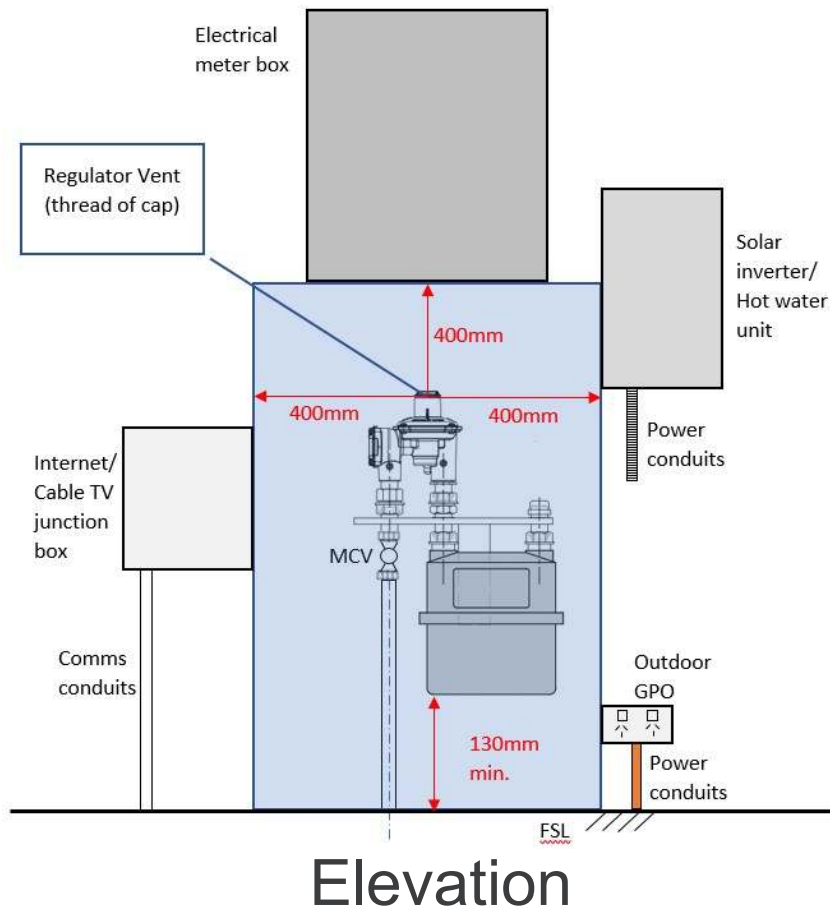
MP Installation - Relief Vent Design

- Vent line size same as regulator vent port (standard domestic DN20)
- Vent line materials - copper, stainless, gal steel
- Union required on regulator vent port
- Maximum length of vent line 7 metres, unless vent diameter increased
- Maximum length of vent may be increased with larger vent diameter (table to be included in Construction Field Manual)
- Number of bends in vent will reduce maximum length (table to be included in Construction Field Manual)
- Vent terminal to be fitted with pest screen

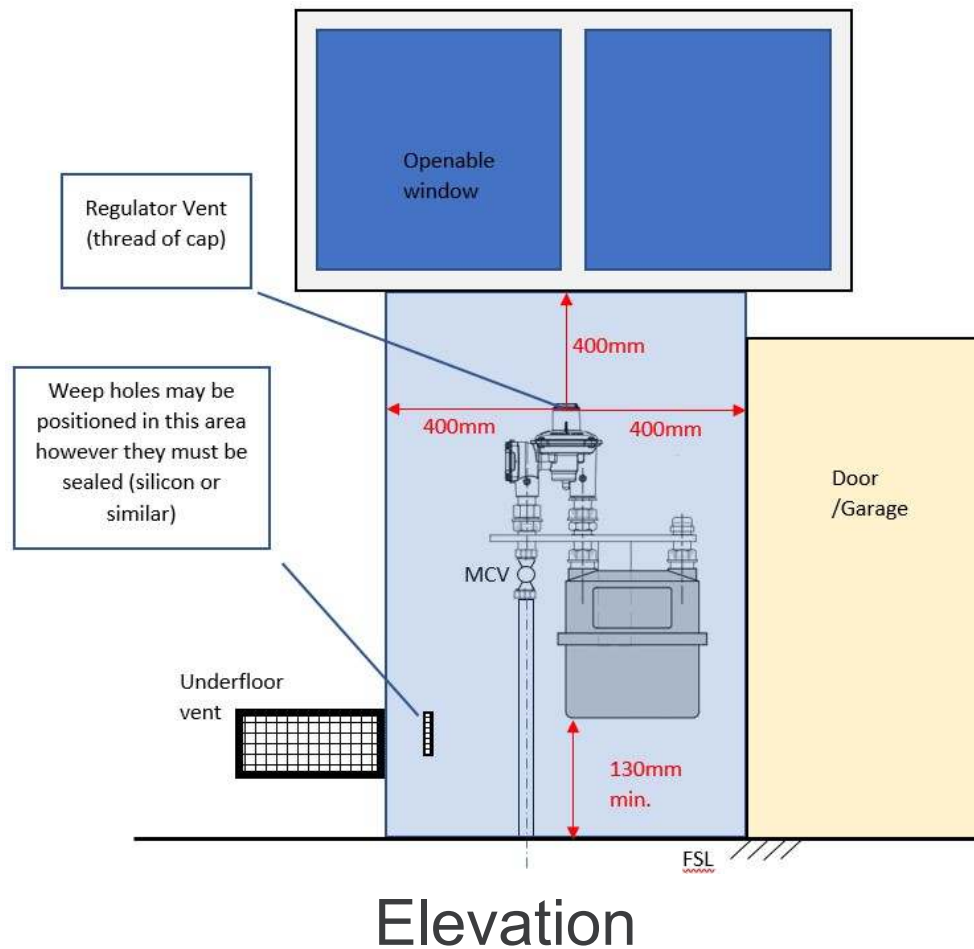


Low Pressure ($\leq 7\text{kPa}$)
Service Pressure

LP Installation – Ignition Sources



LP Installation – Openings



LP Clearances – AC & Mechanical Inlets

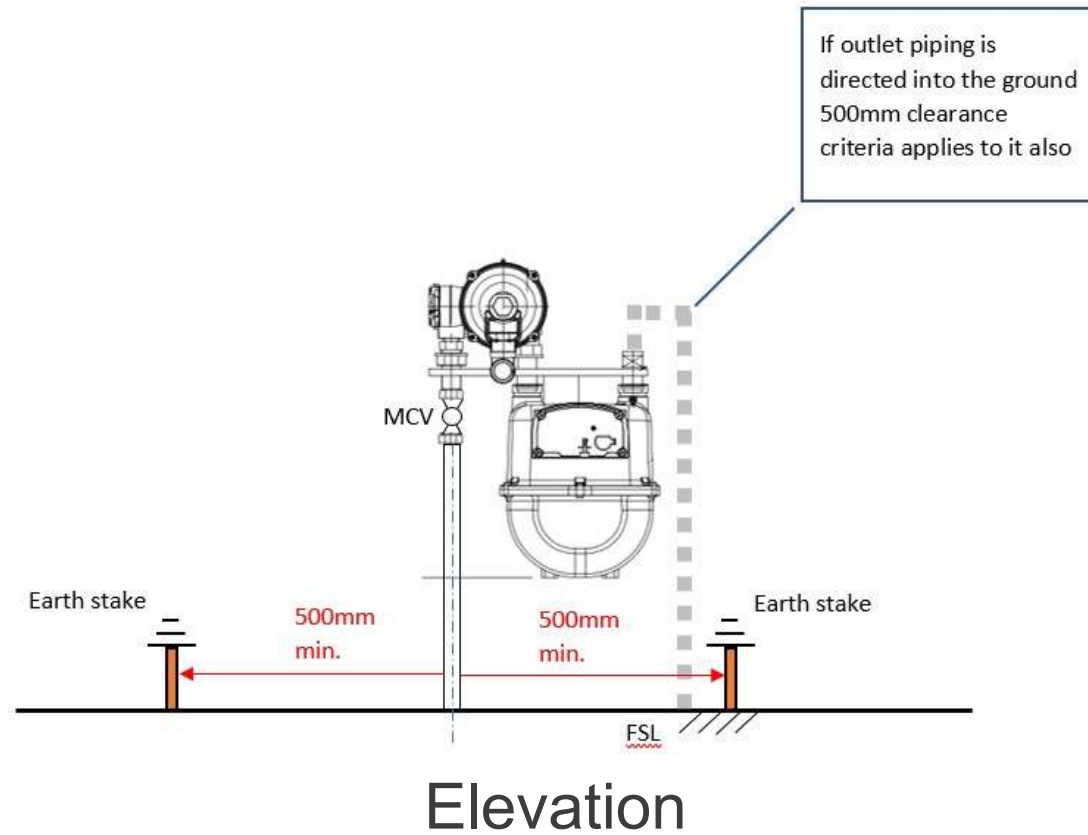
- Clearances from air conditioner inverters (1000mm) and mechanical inlets (3000mm) are applied the same for LP installations i.e. clearance measured from regulator cap


The background features a series of overlapping, curved shapes in various shades of blue (dark, medium, light, and bright cyan) and white, creating a dynamic, modern aesthetic.

Earth Stake Clearance Requirements

Applies to all kits

Earth Stakes

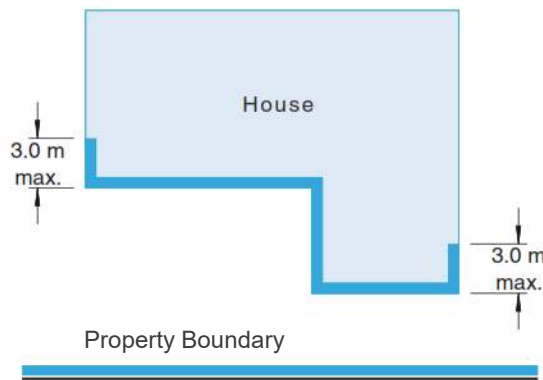




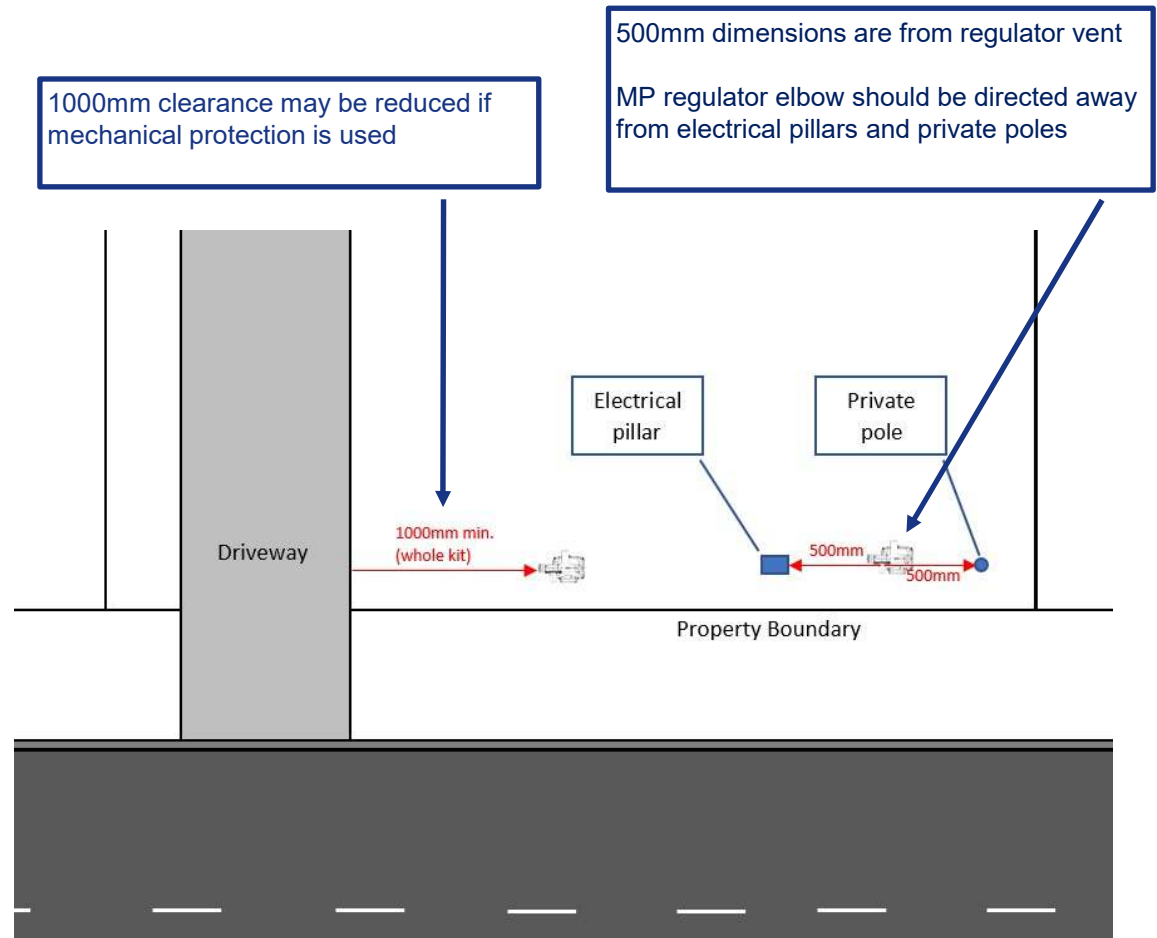
Allowable Meter Kit Locations

Position and
Clearance
Requirements

Allowable Locations



Meter kit
allowable
locations



Property boundary clearances